



Pathway to Personalized Medicine

Wisconsin BioHealth Tech Hub

The Evolution of Healthcare is in Wisconsin

Investing in Innovative Regions Shaping the Future — EDA Tech Hubs Program



Established under the CHIPS and Science Act of 2022, the Tech Hubs Program aims to boost U.S. economic and national security by investing in regions that show leadership potential in key technology areas. States form industry-academia-government consortia to compete in this initiative. Through this initiative, the United States strengthens its position as a global technology leader.

Journey through the EDA Tech Hubs Program Phases



Wisconsin's Unique Position — Primed & Ready for a Tech Hub

BIOHEALTH BY THE #S

| | | |
|--|---|--|
| <p>>\$1B in research funds</p> | <p>The biohealth industry grew by 10.6% from 2018-2021</p> | <p>Biohealth's growth generated \$32B in statewide impact in 2021</p> |
| <p>Academic leadership & strong clinical expertise with top-ranked Medical Schools in Madison & MKE</p> | <p>Brookings Institute: Wisconsin Leads in Innovation Criteria</p> <ul style="list-style-type: none"> • 2,500+ STEM degrees • 2,666 patents • 12% growth in university R&D spending • Madison ranks #1, and Milwaukee #17 <p>These indicators highlight the Wisconsin Biohealth Tech Hub's pivotal role in innovation.</p> | |
| <p>Employment multiplier of 2.5 for every biohealth job, another 1.5 jobs are created</p> | | |

SIGNIFICANT SUPPORT

| | | | | |
|---|--|---|---|--|
| <p>>\$80M TOTAL in funding & investment commitments</p> | <p>\$49M awarded in federal funds</p> | <p>>\$7.5M committed by the state</p> | <p>>\$21M committed by the consortium</p> | <p>>\$3.4M committed by the industry</p> |
|---|--|---|---|--|

United for a Shared Vision

The Consortium

Lead Consortium Member

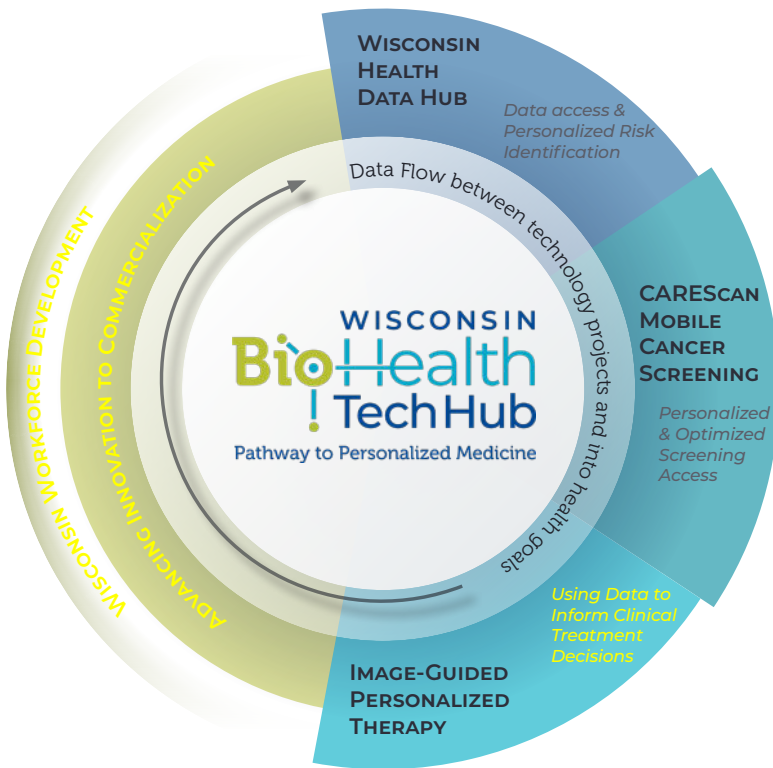


A consortium of 18 partners, including industry leaders, academic and research institutions, economic development groups, and labor and workforce development organizations.

Consortium Members



The Projects



Five interconnected projects, led by Wisconsin Biohealth Tech Hub Governance, will unite innovation, technology, and workforce development initiatives, building a world-class personalized medicine center.

- 1. Wisconsin Health Data Hub-** aims to establish a cyber-secure repository of health data from health partners across the state, reducing the cost and time required to bring new therapies to market.
- 2. CAREScan Mobile Cancer Screening-** addresses health disparities by deploying mobile cancer screening fleets in underserved communities, collecting valuable biomarker data.
- 3. Image-Guided Personalized Therapy-** using data to support clinical treatment decisions, supporting the growth of theranostics and driving innovation in personalized medicine.
- 4. Advancing Innovation to Commercialization-** provides a critical support network for entrepreneurs, offering lab space, investment attraction, capital efficiency and de-risking strategies to move innovations commercialization.
- 5. Wisconsin Workforce Development-** ensures a skilled workforce to sustain sector growth by creating inclusive talent pipelines aligned with employer demands.

Future Impact — WITHIN 10 YEARS (PENDING FULL FUNDING OF THE PROJECTS)



Economic Growth in Wisconsin



Advancing Innovation



Improved Quality of Life



Health Equity

as much as **\$9B**
in regional GDP growth

up to **30K jobs**
added to the biohealth ecosystem

